

Faster Data Transmission



No delay
in games



Download
faster



Smoother
viewing





Wide Range of Applications

Compatible with RJ45



Desktop



Laptop



TV



Router



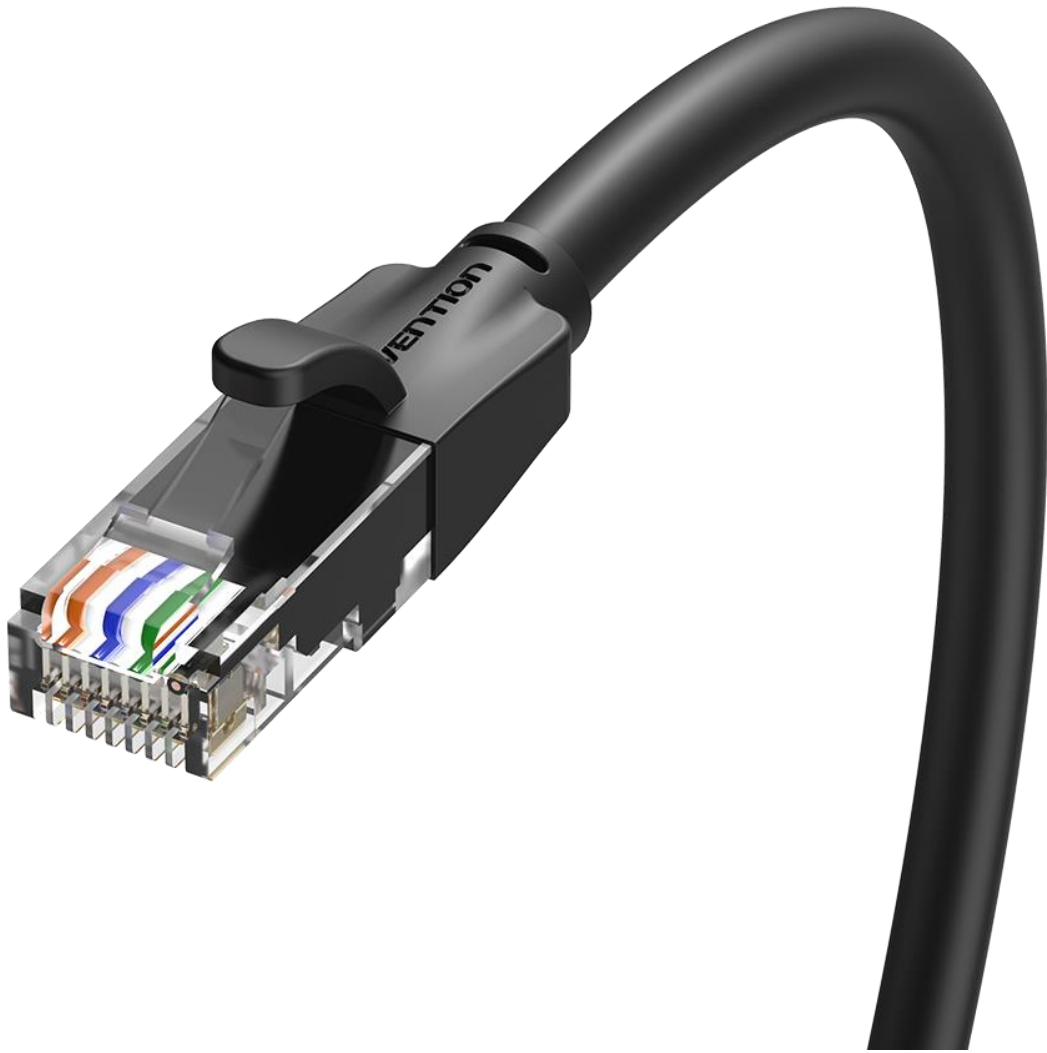
Switch



ADSL



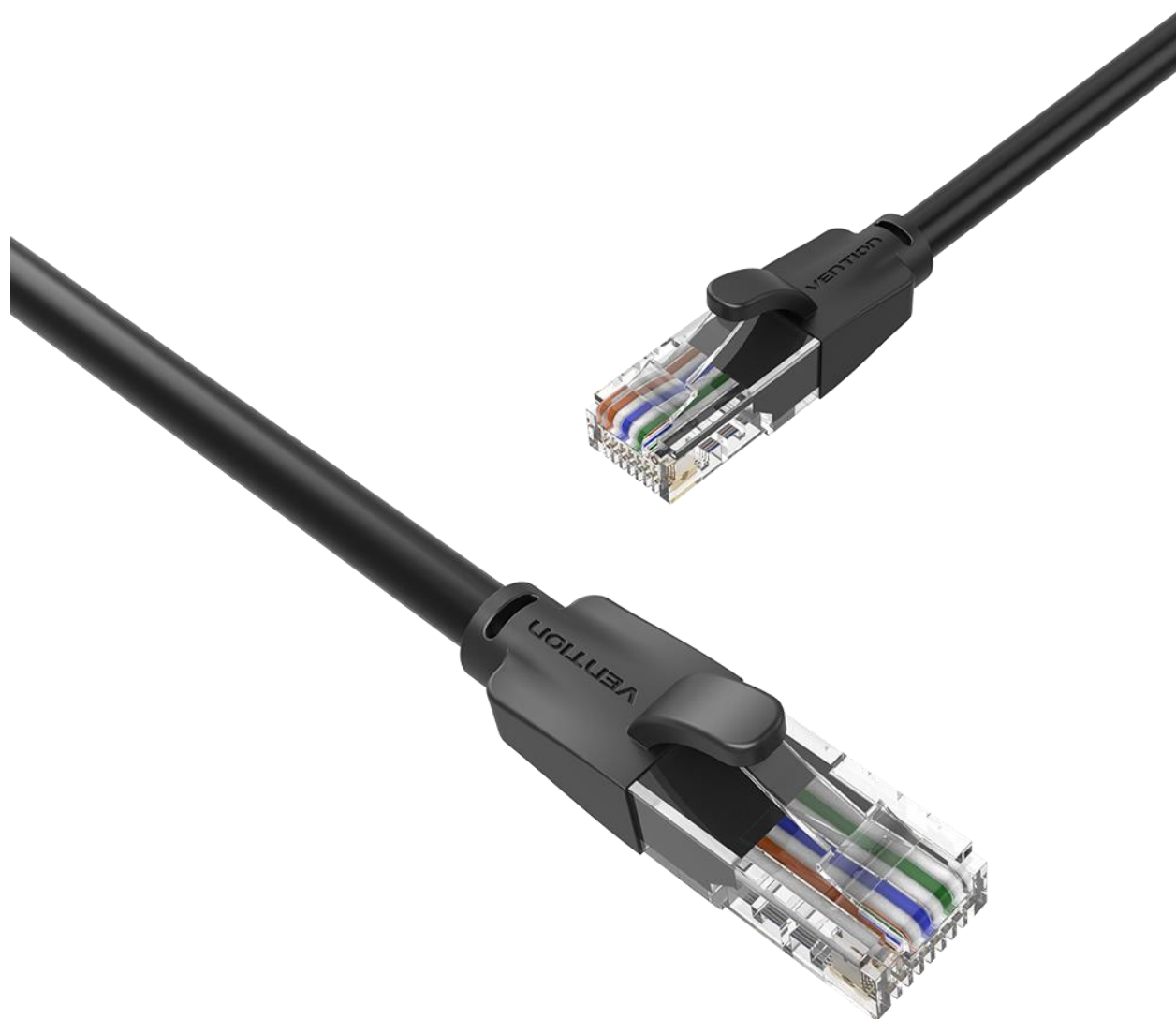
MODEM





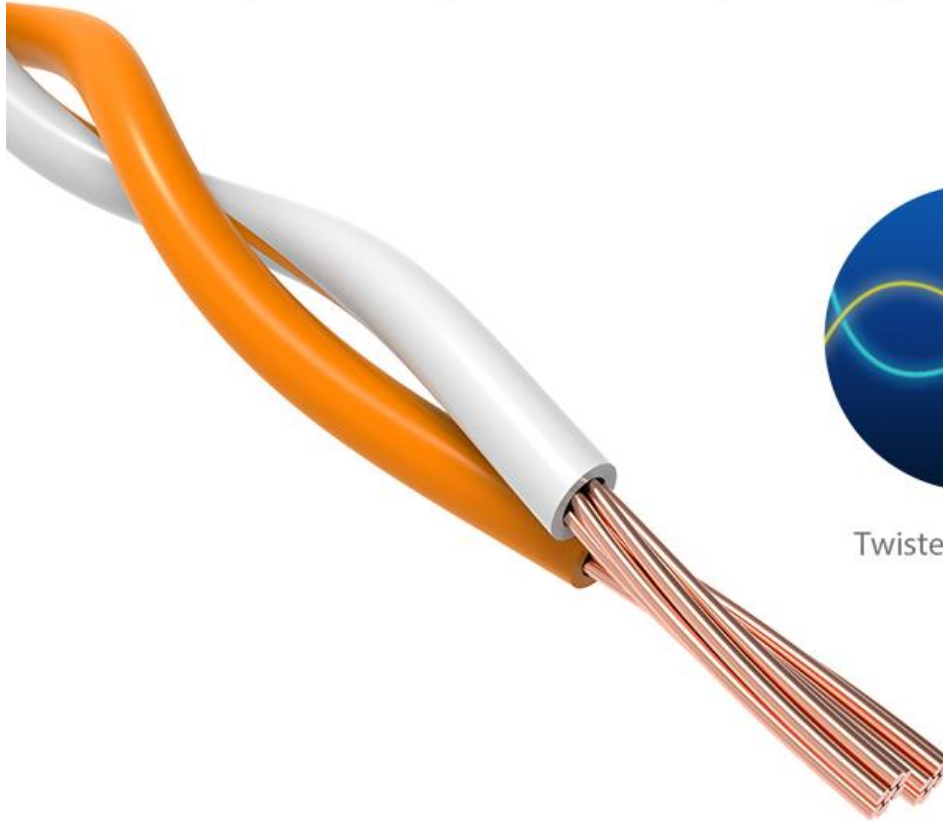
Won't Lost Connection With High Stability

Connect to gigabit network,
no loss signals in long-cable transmission



Eight-core Twisted Pair is More Resistant to Interference

Four pairs of eight cores to improve signal stability

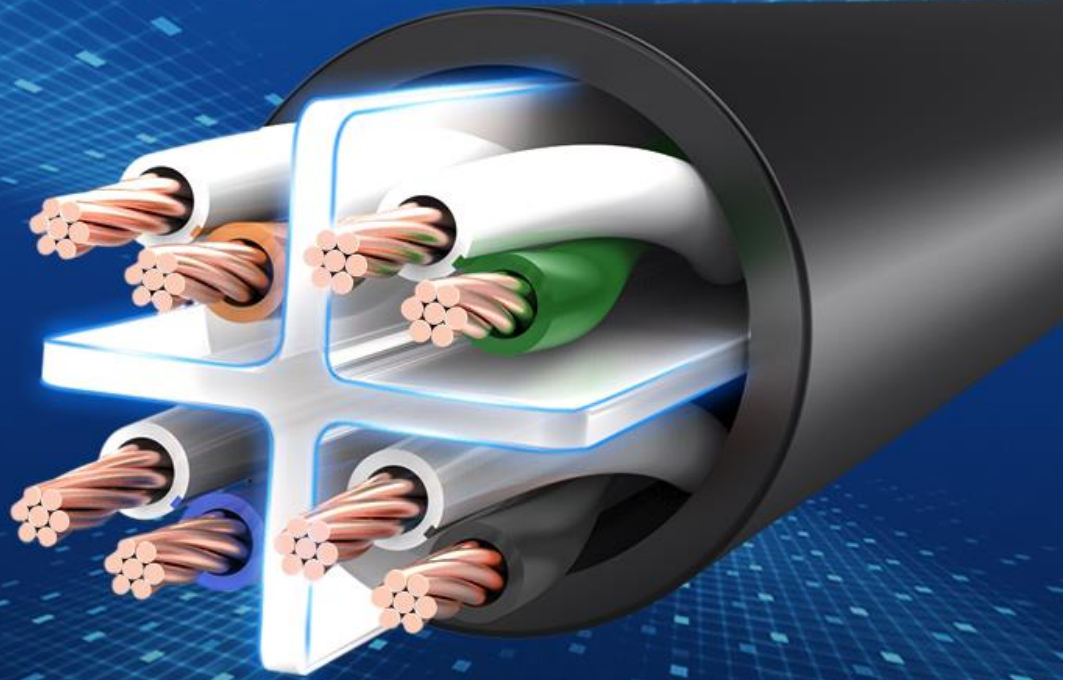


Twisted Structure



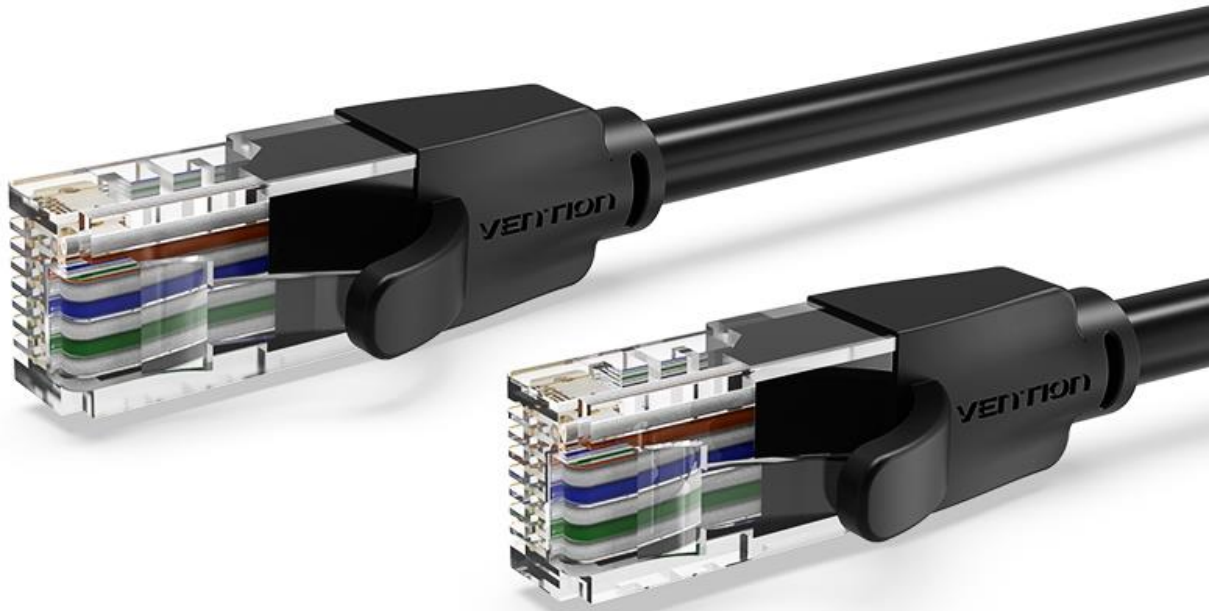
Stable Cross Skeleton Structure

Isolate 4 pairs of twisted pairs to reduce crosstalk and return loss during transmission



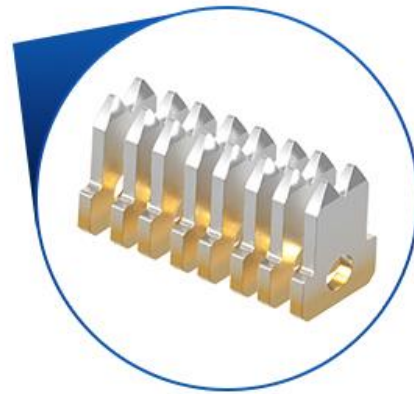
Refined Crystal Head

Integrated injection molding, stable and firm plugging resistance



Speed Won't Decrease After Long Time Use

With a two-prong chip, gold-plated pins for better connection



Gold-plated Contacts

Robust And Flexible

Made of PVC, wear-resistant and long service life



Applicable Scene



For office use



For home use



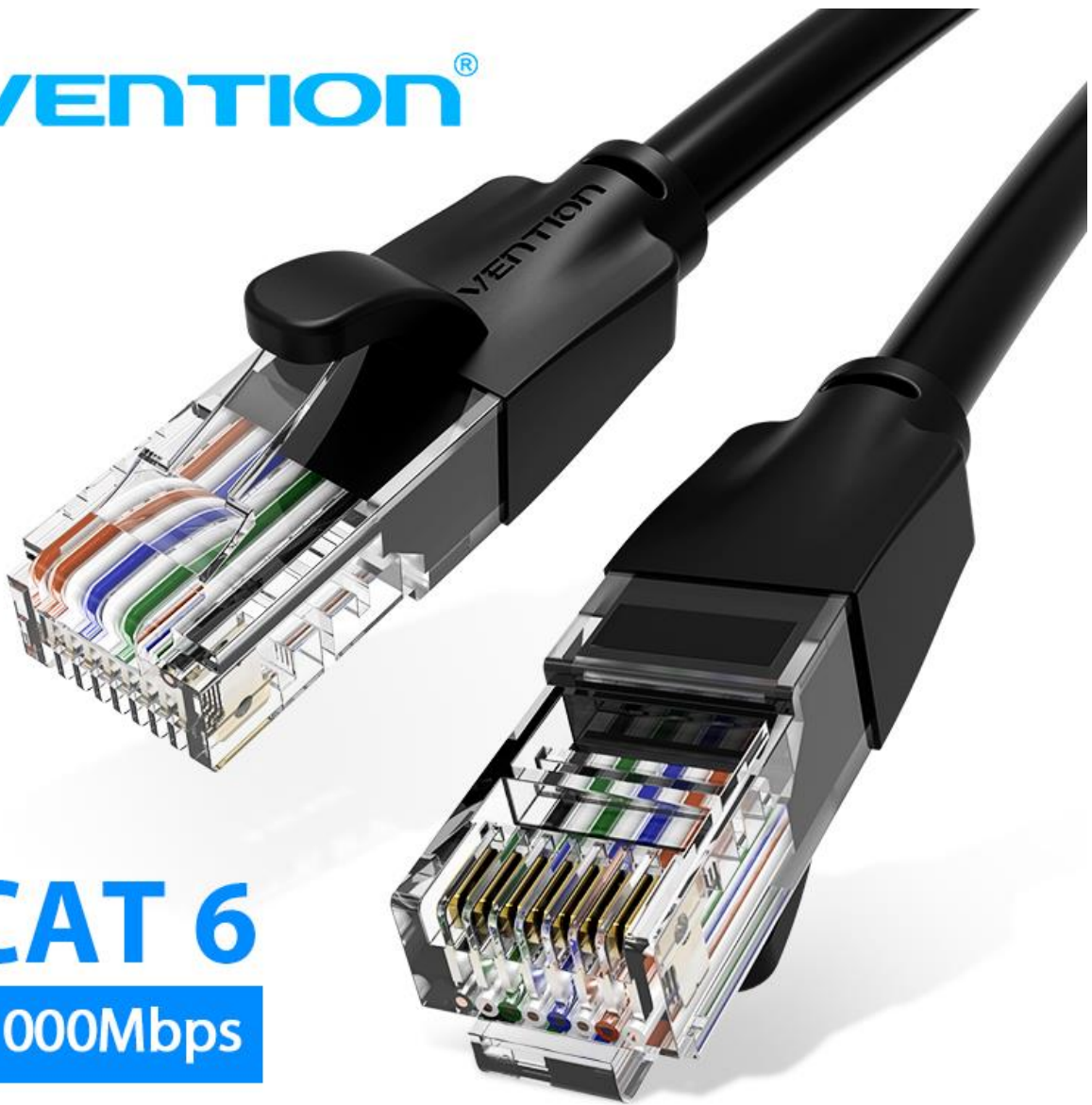
For internet cafe



For hotel

VENTION®

CAT 6
1000Mbps



Varied Length to Choose

0.5m to 40m meets different environmental needs

The shortest length: 0.5m



The longest length: 40m

Product Parameters

Brand	Vention
Name	CAT6 UTP Network Cable
Model	IBE
Appearance Color	Black
Interface Type	RJ45
Line Order	568B
Interface Process	Gold-plated Pins
Transmission Rate	1000Mbps
Conductor	Copper Clad Aluminum
Jacket	PVC
AWG	26AWG
OD	5.5mm
Length	0.5-40m
Warranty	1 Year
Packing	PE Bag

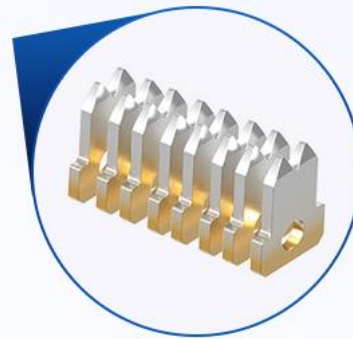
* All data are from Vention laboratory



* Sizes above are hand measurement, there might be slight tolerance

Speed Won't Decrease After Long Time Use

With a two-prong chip, gold-plated pins for better connection

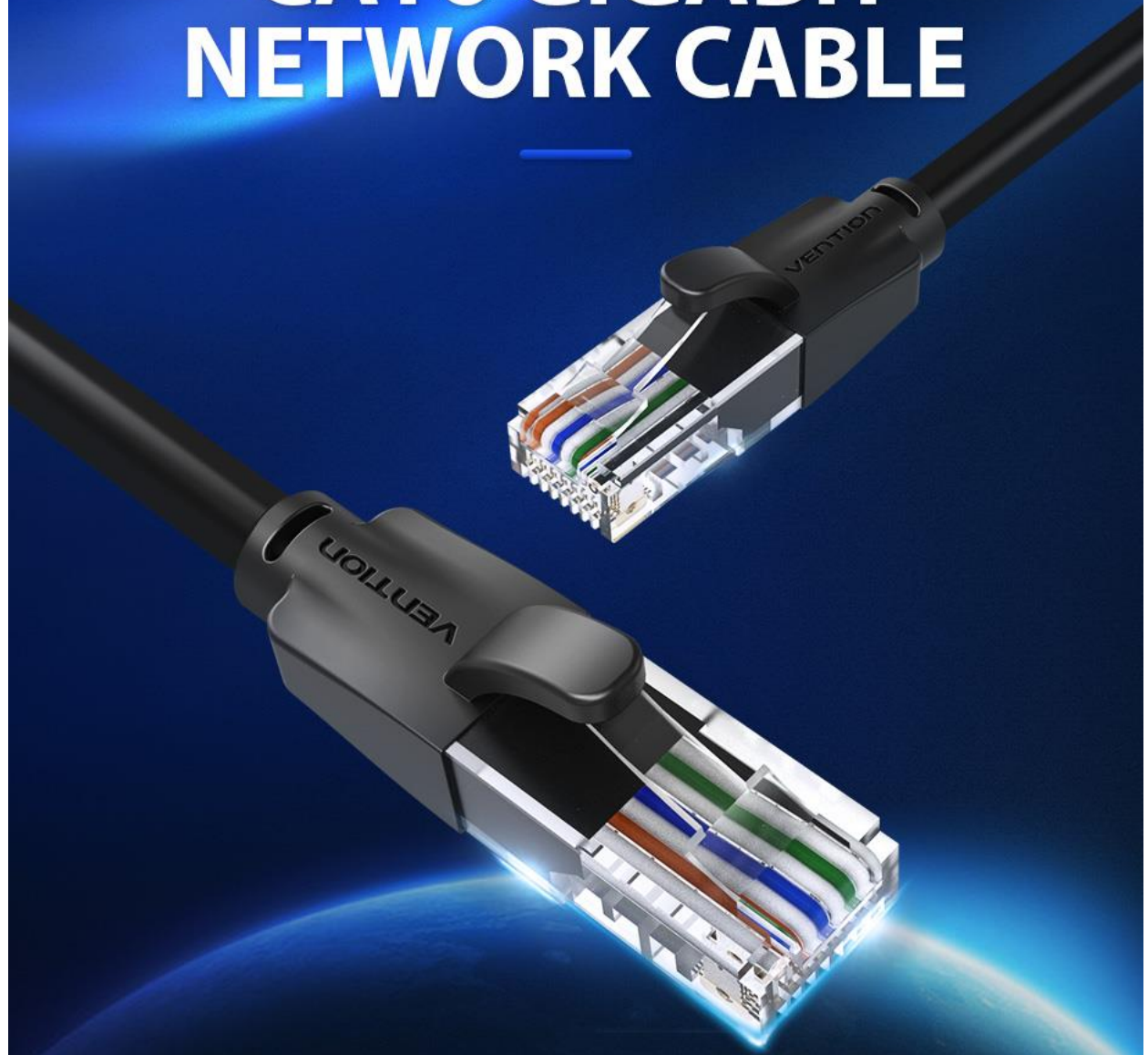


Gold-plated Contacts



* There maybe some difference in packing for different meters and lots
please take the actual packing as standard

CAT6 GIGABIT NETWORK CABLE



Gigabit
Fast transmission

Stable
Surfing

Double twist
Anti-interference

Refined
Crystal interface