

Cat.8 Patch Cable

40Gbps
2000MHz

28AWG
Oxygen free copper core

SFTP
Shielding

PVC
Jacket



40Gbps Transmission Rate 2000MHz Frequency Bandwidth

HD video steaming/Gaming stable/Download fast

40
Gbps



Oxygen Free Copper Core

4 twisted pairs resist external electromagnetic interference

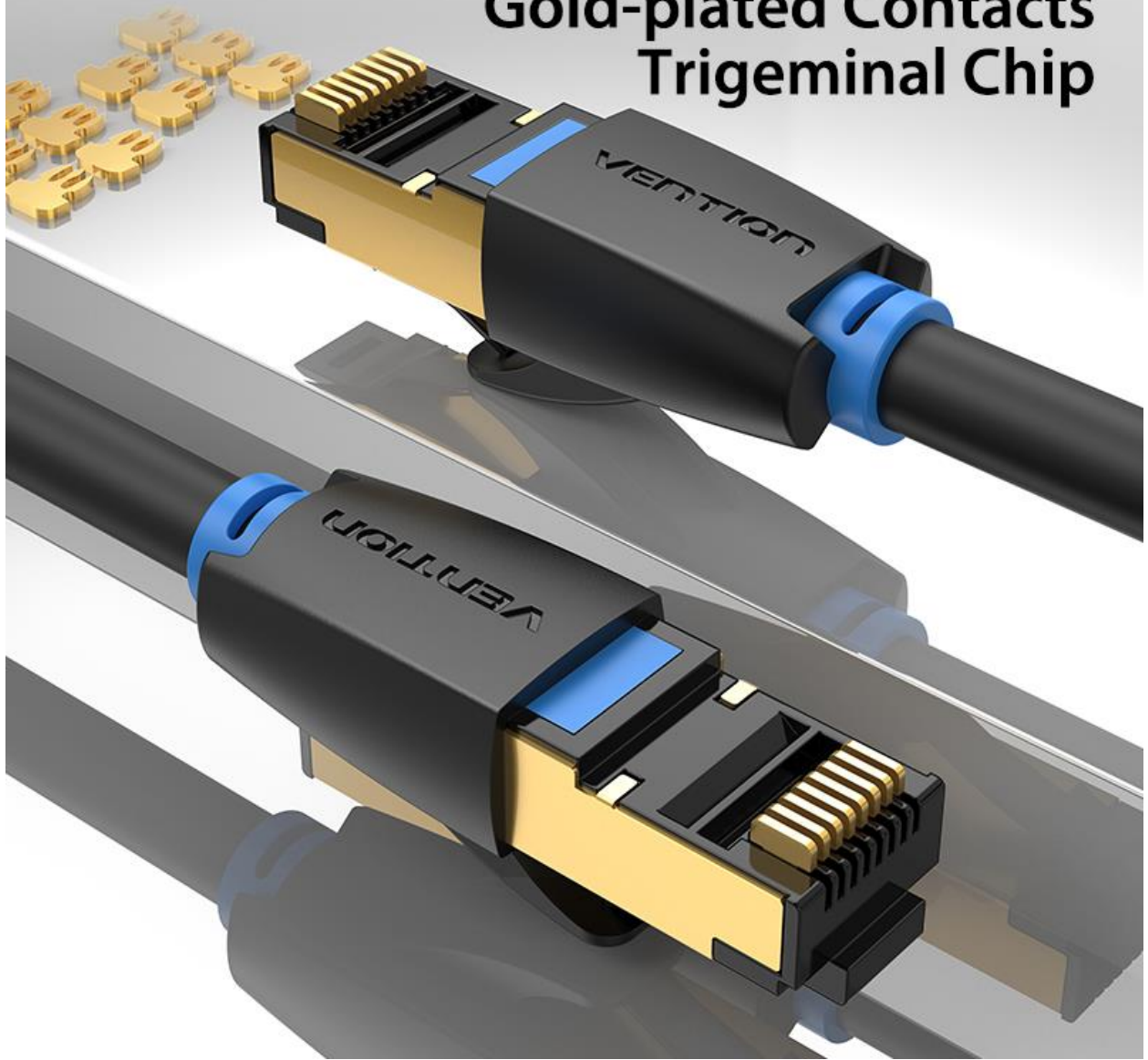


Copper Shell Gold-plated Crystal Head

—
Connections for your audio visual enjoyment



**Gold-plated Contacts
Trigeminal Chip**



Multiple Devices and Scenes



Desktop Laptop Router Switch TV Smart box Digital printer



Home / Office



Internet Cafe / Community



Supermarket / Department Store



KTV / Club



Hotel



School / Building

CAT8

Breathtaking Speed



40Gbps



Multi-layer sheilding



2000MHz



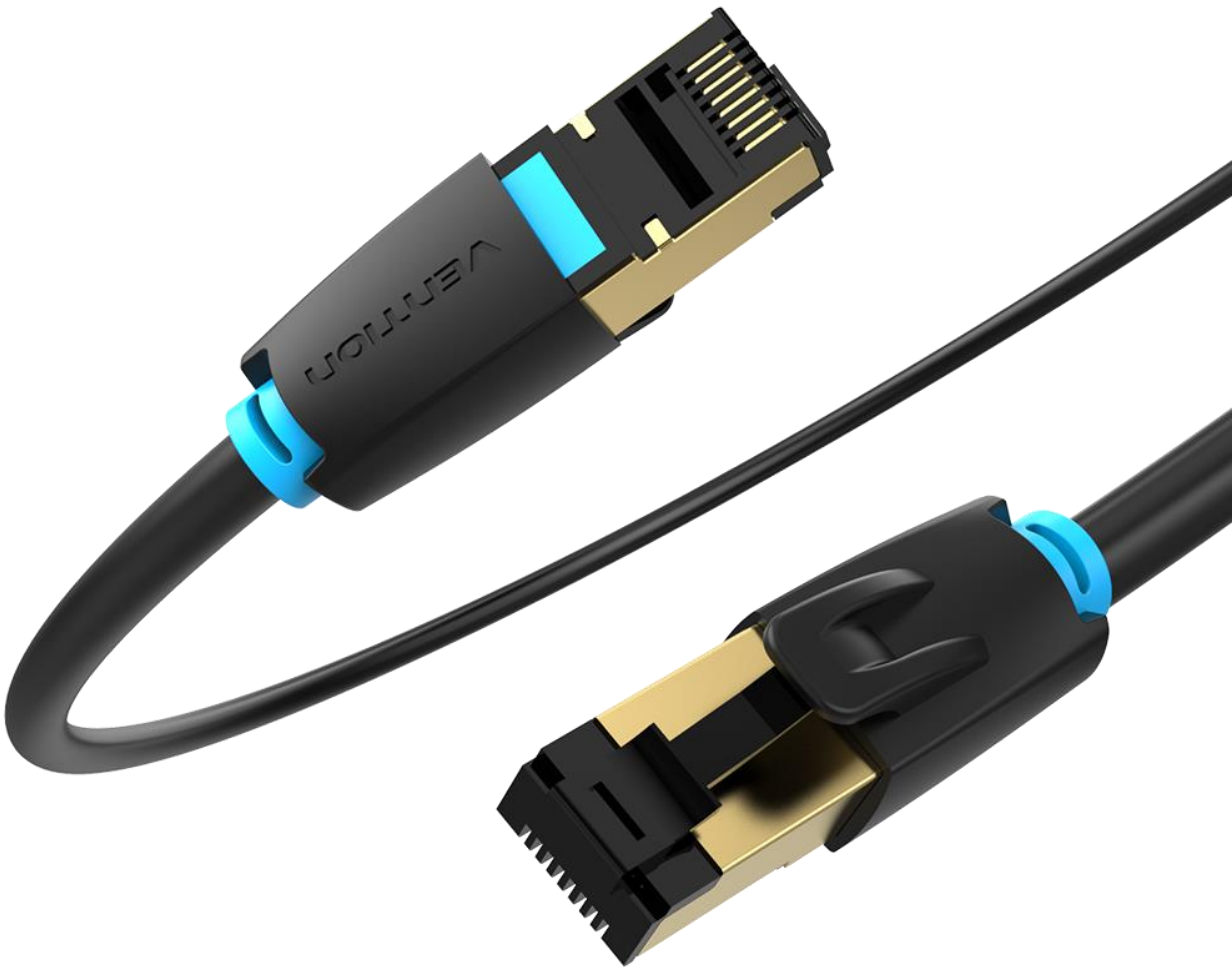
Wear resistance



VENTION®



CAT 8
40Gbps





Aluminum Foil Metal Braided Mesh

SSTP double screened layers ensures stable networking

Oxygen free copper core

Aluminum foil shielding

Metal braided mesh shielding

PVC jacket





Cable ID: CAT8 S/FTP 7/0.127BC FUMAO HEISE2M-4

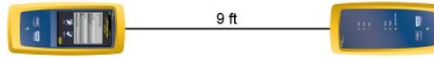
Test Summary: PASS

Date / Time: 08/27/2019 06:50:13 PM
 Headroom **10.9 dB (NEXT 3,6-4,5)**
 Test Limit: TIA Cat 8 Channel
 Cable Type: Cat 8 S/FTP
 NVP: 78.0%

Operator: GAO NIAN
 Software Version: V6.0 Build 6
 Limits Version: V7.0
 Calibration Start Date:
 Main (Module): 06/11/2017
 Remote (Module): 06/11/2017

Model: DSX-8000
 Main S/N: 1710090
 Remote S/N: 1710089
 Main Adapter: DSX-CHA804
 Remote Adapter: DSX-CHA804

Length (ft), Limit 98	[Pair 1,2]	9
Prop. Delay (ns), Limit 179	[Pair 7,8]	11
Delay Skew (ns), Limit 17	[Pair 1,2]	0
Resistance (ohms), Limit 6.40	[Pair 1,2]	0.69
Insertion Loss Margin (dB)	[Pair 1,2]	28.8
Frequency (MHz)	[Pair 1,2]	1988.0
Limit (dB)	[Pair 1,2]	32.6



Worst Case Margin Worst Case Value

PASS	MAIN	SR	MAIN	SR
Worst Pair	3,6-4,5	3,6-4,5	3,6-4,5	3,6-4,5
NEXT (dB)	10.9	12.5	20.1	21.3
Freq. (MHz)	2.9	4.1	2000.	2000.
Limit (dB)	65.0	63.6	9.8	9.8
Worst Pair	3,6	3,6	4,5	3,6
PS NEXT (dB)	13.3	14.3	22.3	21.9
Freq. (MHz)	2.9	4.3	2000.	1998.
Limit (dB)	62.0	60.1	7.3	7.4

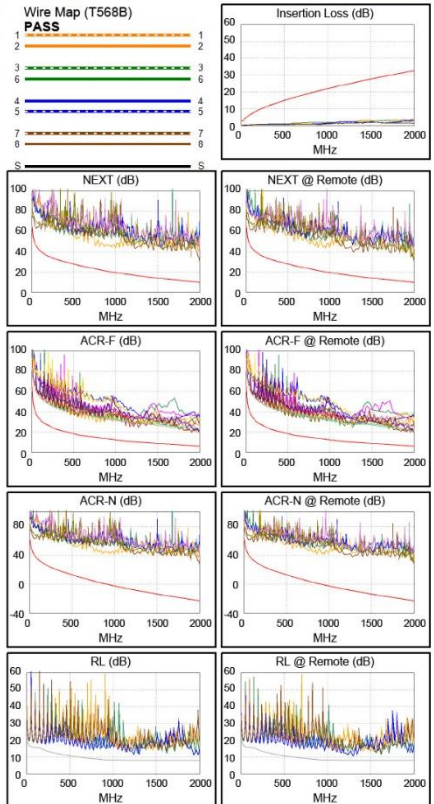
PASS	MAIN	SR	MAIN	SR
Worst Pair	7,8-4,5	3,6-4,5	7,8-4,5	3,6-4,5
ACR-F (dB)	13.4	13.3	13.4	13.3
Freq. (MHz)	1950.	1910.	1950.	1910.
Limit (dB)	6.2	6.3	6.2	6.3
Worst Pair	4,5	4,5	4,5	4,5
PS ACR-F (dB)	13.6	14.1	13.7	14.2
Freq. (MHz)	1952.	1908.	1956.	1958.
Limit (dB)	3.2	3.4	3.1	3.1

N/A	MAIN	SR	MAIN	SR
Worst Pair	3,6-4,5	3,6-4,5	3,6-4,5	3,6-4,5
ACR-N (dB)	13.8	15.4	49.7	50.9
Freq. (MHz)	2.9	4.1	2000.	2000.
Limit (dB)	62.0	60.6	-22.9	-22.9
Worst Pair	3,6	3,6	4,5	3,6
PS ACR-N (dB)	16.2	17.2	51.8	51.8
Freq. (MHz)	2.9	4.3	2000.	1998.
Limit (dB)	59.0	57.1	-25.3	-25.3

PASS	MAIN	SR	MAIN	SR
Worst Pair	4,5	3,6	4,5	3,6
RL (dB)	3.2	3.7	3.2	3.7
Freq. (MHz)	1938.	1620.	1938.	1620.
Limit (dB)	8.0	8.0	8.0	8.0

Compliant Network Standards:

10BASE-T	100BASE-TX	100BASE-T4
100BASE-T	2.5GBASE-T	5GBASE-T
10GBASE-T	25GBASE-T	40GBASE-T
ATM-25	ATM-51	ATM-155
100VG-AnyLan	TR-4	TR-16 Active
TR-16 Passive		



LinkWare™ PC Version 10.3